

MEGA-CART

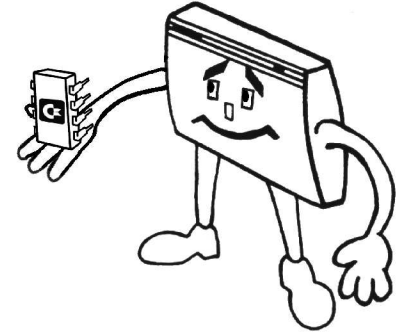
FOR THE COMMODORE VIC-20

Hardware Design
Brian Lyons

Menu Software
Nicola Di Battista

Music
Anders Carlsson

Graphic Design
Brent Santin



Thank you for purchasing the Mega-Cart! This instruction sheet will provide you with the basic knowledge needed to use your new cartridge. For additional information, visit <http://www.mega-cart.com> on the world-wide-web.

GETTING STARTED

1. Turn on your television set.
2. Turn your VIC-20 off.
3. Insert the cartridge.
4. Turn the VIC-20 on.

Your Mega-Cart is now activated and you may choose from hundreds of software titles, use it as a memory expander and much more!

SERVICE MENU

The Mega-Cart uses a special service/maintenance menu where you may perform special activities or set particular options. In order to enter this Menu you need to hold down the CTRL key when you turn on or reset the VIC-20.

This menu allows you to backup, restore or clear your Mega-Cart preferences, choose background menu music and set the "quick" or "standard" menu navigation mode. The Mega-Cart checks for an external disk-drive on device numbers 8 to 15 (in this order) in order to load a preferences file or save a backup.

The preferences file is stored in the Mega-Cart's non-volatile RAM. This file contains such settings as your favorite items, custom Early Menu items, filters (Categories, Publisher, System, etc) and other things. Because the settings are unique to each user a periodic backup is recommended.

BOOT KEYS

Some special functions of the Mega-Cart can be accessed by holding down various keys on booting the VIC-20:

- | | | | |
|--------------|---|----------|--|
| CTRL | Enter the SERVICE MENU | 1 | Lock Cartridge games menu |
| ↶ | Restart last selected item | 2 | Lock Tape/Disk games menu |
| SPACE | Select a menu tune | 3 | Lock Utilities menu |
| f 1 | Start the VIC Unexpanded | 4 | Lock Normal Reset menu |
| f 3 | Start the VIC +3K Ram | 5 | Lock Soft Reset menu |
| f 5 | Start the VIC +32K Ram | 6 | Lock Last Selection |
| f 7 | Start the VIC fully Expanded with EASYLOAD+ | 0 | Unlock previous 1-6 selection and enter the Early Startup Menu |

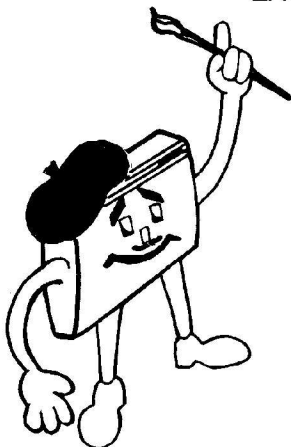
EARLY STARTUP MENU

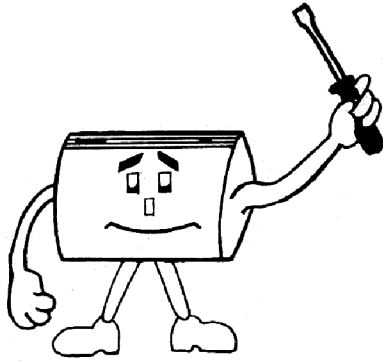
The Early Startup Menu is the Mega-Cart's default menu. When you first use your Mega-Cart this menu should come up automatically. If you have changed the default menu by previously booting with keys 1 to 6 depressed, you can re-enable the Early Startup Menu by holding down the "0" (zero) key while booting. The Early Startup Menu displays a list of submenus:

CARTRIDGE GAMES
TAPE/DISK GAMES
UTILITIES
NORMAL RESET
SOFT RESET (NO AUTO)

LAST SELECTION

games originally produced in cartridge form
games originally produced for tape or disk
useful tools for your VIC
start the VIC with various memory configuration
start the VIC with various memory configuration
(will not autostart a cartridge image in RAM)
restart last selected item





The Early Startup Menu may contain up to 14 custom programs from any of the submenus CARTRIDGE GAMES, TAPE/DISK GAMES and UTILITIES (see next section).

MANAGE EARLY STARTUP MENU CUSTOM ITEMS

You can customize & manage the list of software that appears in the Early Startup Menu. However, this can only be done if you have STANDARD NAVIGATION MODE enabled. For each software title in a sub-menu, you have the option to start it (default choice), add it to the Early Startup Menu or delete it from that menu. If you have QUICK NAVIGATION MODE enabled you will not be able to manage custom items in this way, as QUICK NAVIGATION MODE automatically starts the items by default. However, you may temporarily revert to the STANDARD NAVIGATION MODE from the SERVICE MENU and afterwards restore the QUICK mode.

FAVORITE ITEMS

From the CARTRIDGE, TAPE/DISK and UTILITIES submenus you may select/unselect your favorite items by using the CBM (Commodore) key. A favorite item is highlighted in red with a flag and can be filtered in the list.





FILTER ITEMS

By pressing F3 while in the CARTRIDGE, TAPE/DISK or UTILITIES sub-menus you can enter Filter Menu. Here you can select which games/utilities you want displayed in a sub-menu based on various parameters:

PUBLISH CATEGORY	Filter items by specific publisher or all (not for tape/disk)
SYSTEM	Filter items by specific category or all (not for utilities)
ARCADE	Filter items by specific system, PAL, NTSC, BOTH
PADDLES	Filter arcade/non-arcade items (not for utilities)
FAVORITE	Filter items that use/don't use paddles (not for utilities)
	Filter favorite/non-favorite items

HELP & KEYBOARD SHORTCUTS

From any place you may access the Help page by pressing F1. The Help page shows which keys can be used in each menu and gives a brief explanation of each key's function. There are some keys that have the same behavior in all places:

f 1	Go to the Help Page	f 8	Go to the last page
f 4	Set Music ON or Mute		Move the selection bar up or down
f 5	or  Go to the previous page		Go back to the Early Startup Menu or the locked menu selected with 1-6 boot keys
f 6	Go to the first page	RETURN	Select Item/Function/Filter according to the current menu page
f 7	or  or SPACE Go to the next page		

Alternatively, the joystick can be used to move the selection bar up or down and to go to the previous and next page. The fire button can be used to select an item, function or filter according to the menu you are in.

WHAT YOU HAVE TO KNOW

Occasionally, when resetting the Mega-Cart in order to return to the startup menu, the last game played or a plain VIC-20 boot screen may appear. This is NOT a Mega-Cart anomaly. When this happens just perform another reset. In order to ensure that the reset function works properly be sure to use the Mega-Cart's reset button exclusively. Do not use reset switches on serial/user ports.

That's all folks! We hope you and your VIC-20 have fun with the Mega-Cart and remember...

...visit www.mega-cart.com for the latest information!

